

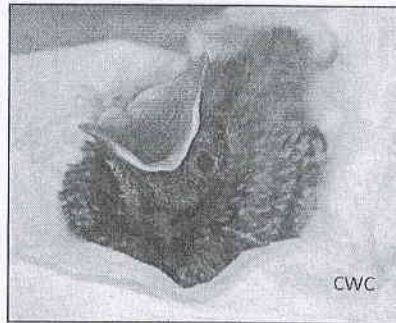
# Found a Nestling?



CAPE WILDLIFE CENTER



- Nestlings are young birds that are not fully feathered and may still have bald patches.
- If you find a nestling on the ground and it is uninjured, look up and around to see if the nest is nearby and place it back in the nest.
- If you can't find the nest, make a new one using an old basket or a small container like a butter tub or berry basket.
- Poke holes in the bottom for drainage and line with dried grass or straw.
- If the bird is cold, warm it up before putting it back in the nest by holding between your hands. Your scent will not keep the parents away if they are still around.
- Hang the new nest as close as possible to the original nest site. The parents should hear their young calling for food.
- Keep your distance from the nest, so you don't scare away the parents.



**If the nestling is injured, the parents don't return or you have any questions, please call Cape Wildlife Center.**

**Remember to wear gloves when handling wildlife and if possible, leave wildlife in the wild where they belong.**

**Please share this to help us keep wildlife safe.**