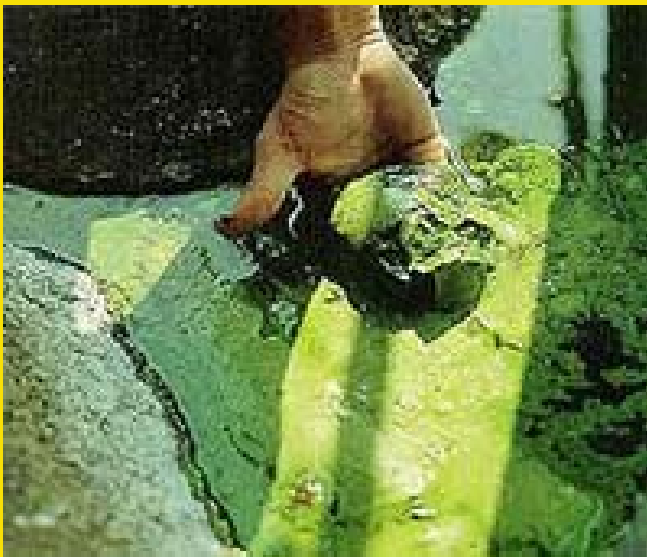




CAUTION

Based on elevated levels of cyanobacteria (blue-green algae), MA Dept. of Public Health thresholds for recreational waters have been exceeded.



- Water which looks like the pictures above may contain algae capable of producing toxins that can be dangerous to humans and pets.
- People and pets should avoid contact in areas of algae concentration- even on shore.
- Do not swallow water and rinse off after contact.

For further information call MDPH at 617-624-5757 or visit www.mass.gov/dph/environmental_health